

Temporary Technical Rider Dec.2025\_V6.

---

# Just the Moon

## Close Call Company



### **Contact:**

**Close Call Company / Raff Pringuet**

(Production/Technical/Artistic):

Closecallcompany@gmail.com

+32498705771 (Raff)

**Thassos** (booking):

[info@thassos.be](mailto:info@thassos.be)

THIS TECHNICAL RIDER IS AN INTEGRAL PART OF THE CONTRACT.  
ADJUSTMENTS CAN BE MADE IF REQUIRED DUE TO SPECIFIC FEATURES  
OF THE VENUE BUT ONLY IN NEGOTIATION WITH THE COMPANY.

## **GENERAL:**

- Duration:** 45min with no intermission  
**Team on tour:** 1 performer, 1 technician  
**Audience:** Frontal audience  
**Recommended age:** Adult audience / Family (8+) / School (8+)  
**Max. audience capacity:** 200 (max. twice a day)  
**Technicians of the house:** 1x light, 1x sound (for set-up)  
**Stage:** Black Box
- **SIZE:** W: 8m. x D: 8m. x H: 5m.
  - **Full black out** possible (not possible to see artist during black out)
  - **Frontal audience**, The Edge of the stage should be visible for everyone
  - **Black dance floor** (A hard, flat, even floor)

## **SCHEDULE:**

### **for a performance afternoon: 14h (exemplary):**

- 09:00 - 10:30 Arrival, unload, set up, hang lights  
10:30 - 12:00 Aim lights,  
12:00 - 13:00 Lunch  
13:00 - 14:00 Preparations + Warm up  
**14:00 - 14:45 SHOW** (Doors: max. 5 min. before)  
15:15 - Built down

### **Show before 13h:**

**lights and sound need to be prepared Or a set-up day**

### **For a performance before noon: 11h (exemplary):**

- 08:00 - 10:00 Arrival, unload, set up, aim lights  
10:00 - 11:00 Sound check + warm up  
11:00 - 11:45 SHOW (Doors: max. 5 min. before)  
12:15 - Built down

## **TRANSPORT / ACCOMODATION**

- Details will be discussed by mail
- Accommodation is to be supplied in instances where the arrival and/or return of the artists on the same day is not possible.
- A parking spot for our car (Renault kangoo L: 4m x H:2 m, license plate: 2-AUF-053).
- Possibility to unload our equipment directly at the venue.

## **COSTUME / DRESSINGROOM**

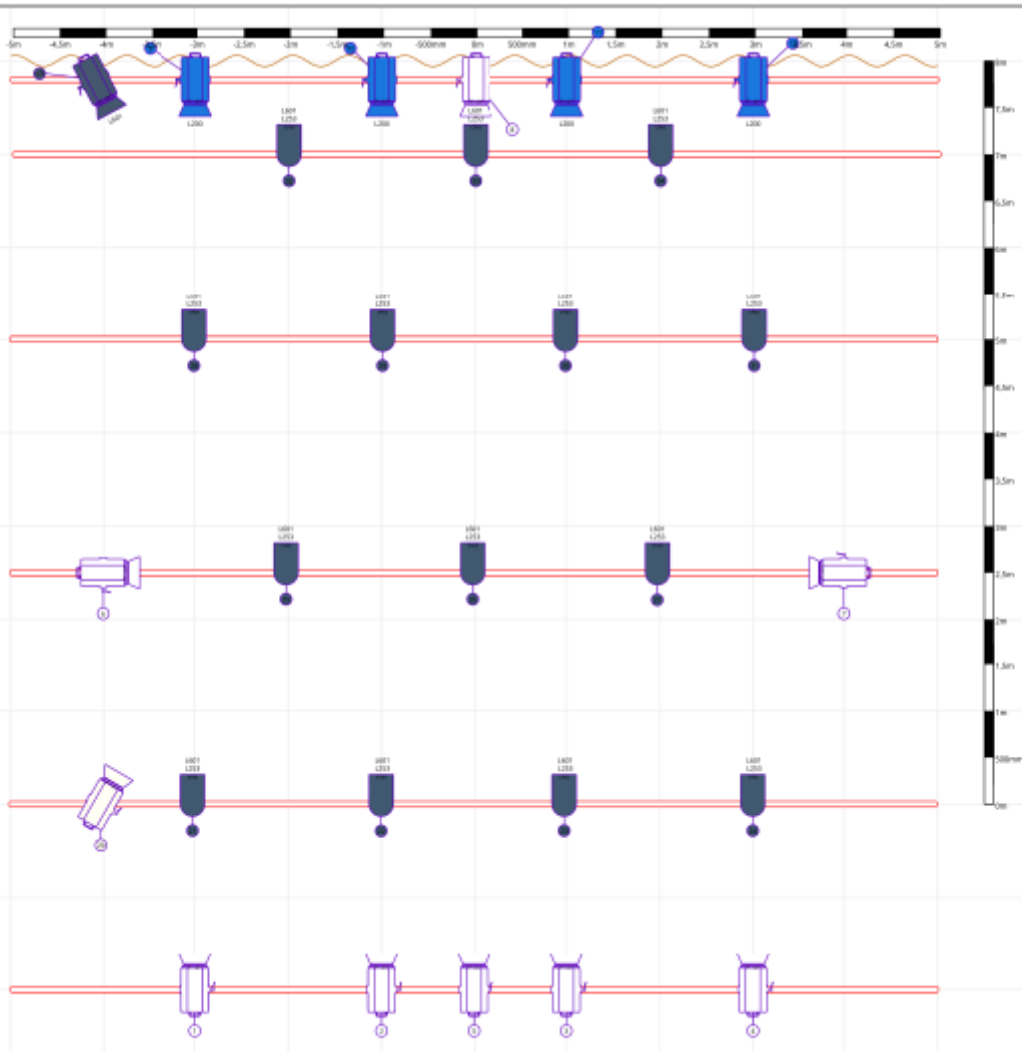
- A properly heated, clean, and secure dressing room with a mirror.
- Towels and a shower are appreciated.

## **FOOD**

- details will be discussed by mail
- Dinner for 2 people OR per diems according to the official rate.
- 2 vegetarian (light and healthy) meals

# Light Plan 'Just the Moon'

## Flybars



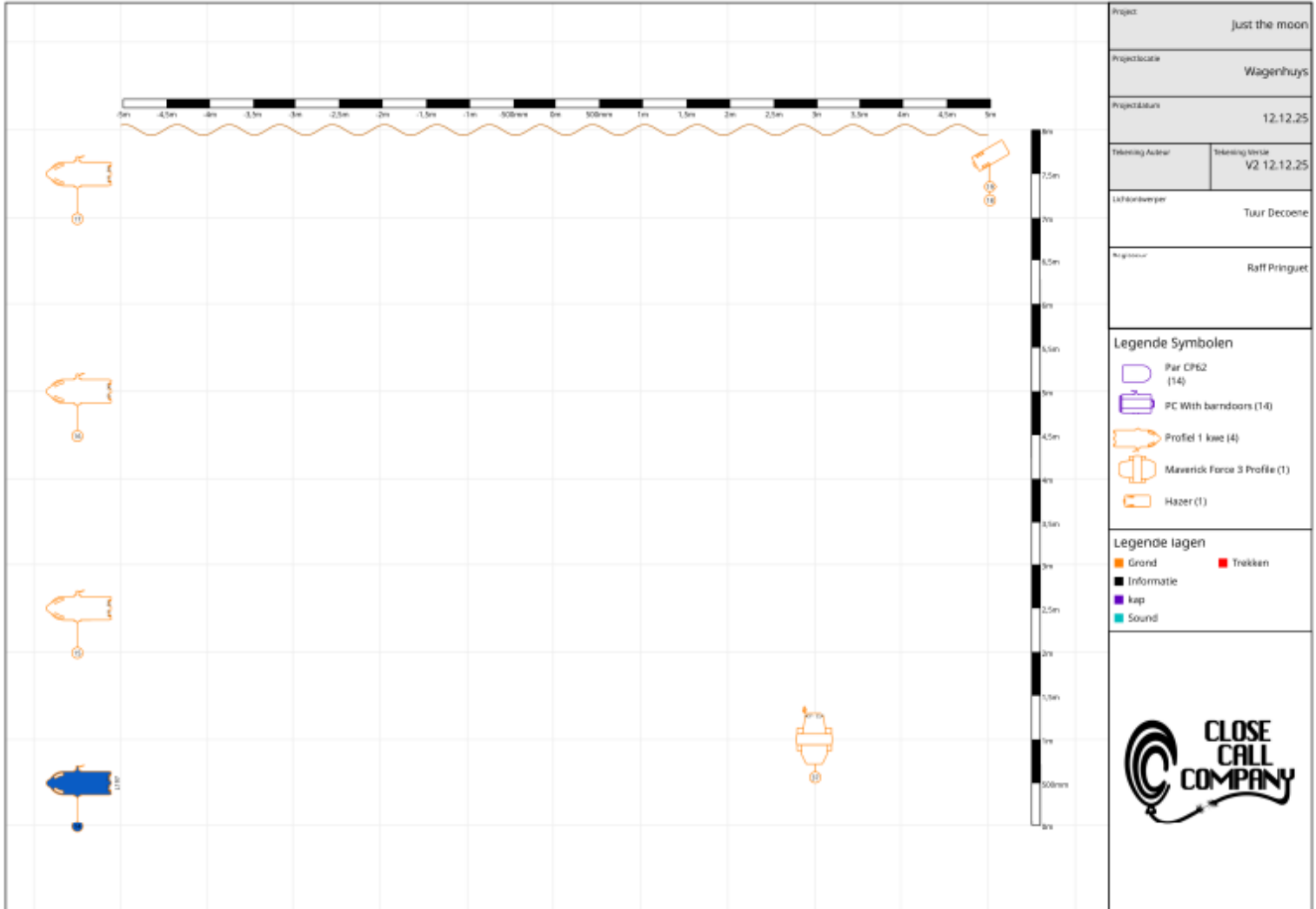
Project	Just the moon
Projectlocatie	Wagenhuys
Projectdatum	12.12.25
Tekening Auteurs	Tekening Versie V2 12.12.25
Lichtontwerper	Tuur Decoene
Strooming	Marie Heesters
Regisseur	Raff Pringuet

Legende Symbolen	
	Par CP62 (14)
	PC With barn doors (14)
	Profil 1 kwe (4)
	Maverick Force 3 Profile (1)
	Hazer (1)

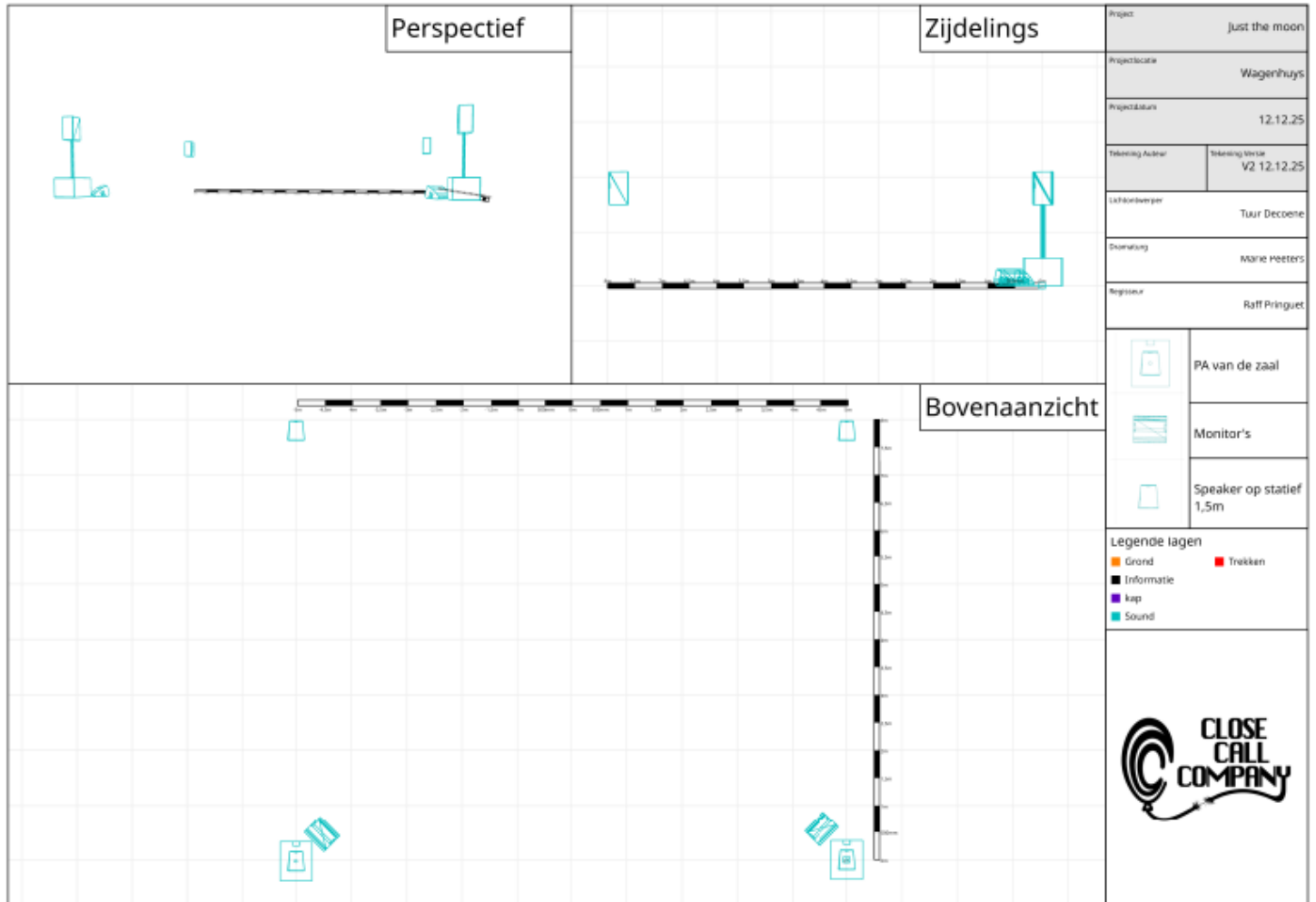
Legende lagen	
	Grond
	Informatic
	kap
	Sound
	Trekken



# Floor



## sound



### ATTENTION:

- \* **The back curtain is used as the reference point:**
  - Should be (hang) between **6,5m** and **8m** from the front of the stage.
- \* **A clearer version of the light plot will be send separately.**

## **MATERIAL LIST:** (to be provided by the theater)

<b>Material:</b>	<b>Quantity</b>	<b>Specification</b>
1KW PAR	X 14	Filters: 14 x L601 & L253
1KW PC (barndoors)	X 14	Filter: 4x L 200
1KW PROFILE	X 4	Filter: 1x L197
Floor Light stand	X4	
Hazer	X1	
Speakers FOH	R & L	
Monitor	X4	2 frontage center (monitor) 2 back of stage on a stand (quadrophony)
Sound table	X1	OUTPUT:4x jack out (quadraphonic mix L/R + 1 FOH mix L/R)
Dmx 5-pin connection	1x	From the side of the stage to light desk
Schuko 230 volt connection	1x	On stage Right (Jardin)
Dimmer	32x	We need 30 dimmers for our lights + the number of dimmers for the audience lights in the theater
Marverick Force 2 Profiel	X0	We bring our own moving head

## **Rights:**

### **The Piece:**

The production is ingeschreven bij 'De Auteurs'

### **The Music:**

The music used during the piece: ....

Music Composition: Stan Nieuwenhuize